

NOTES:

- 1) SEE UNIT NAME PLATE FOR ELECTRICAL RATING
- 2) ALL FIELD WIRING MUST BE IN ACCORDANCE WITH N.E.C.-N.F.P.A. #70
- 3) ALL 208/230 VOLT BLOWER MOTORS EXCEPT HE031 AND HE041, 460 AND 575 VOLT BLOWER MOTORS ARE SINGLE SPEED

- 4) WHEN THESE CONDUCTORS EXCEED 25 FT. IN LENGTH, FROM THE OUTDOOR UNIT TO THE FUSED DISCONNECT, THEY MUST BE OF THE SAME SIZE (CAPACITY) AS THE SUPPLY CONDUCTORS TO THE OUTDOOR UNIT.



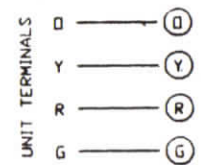
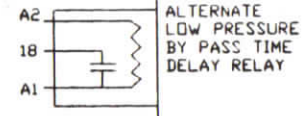
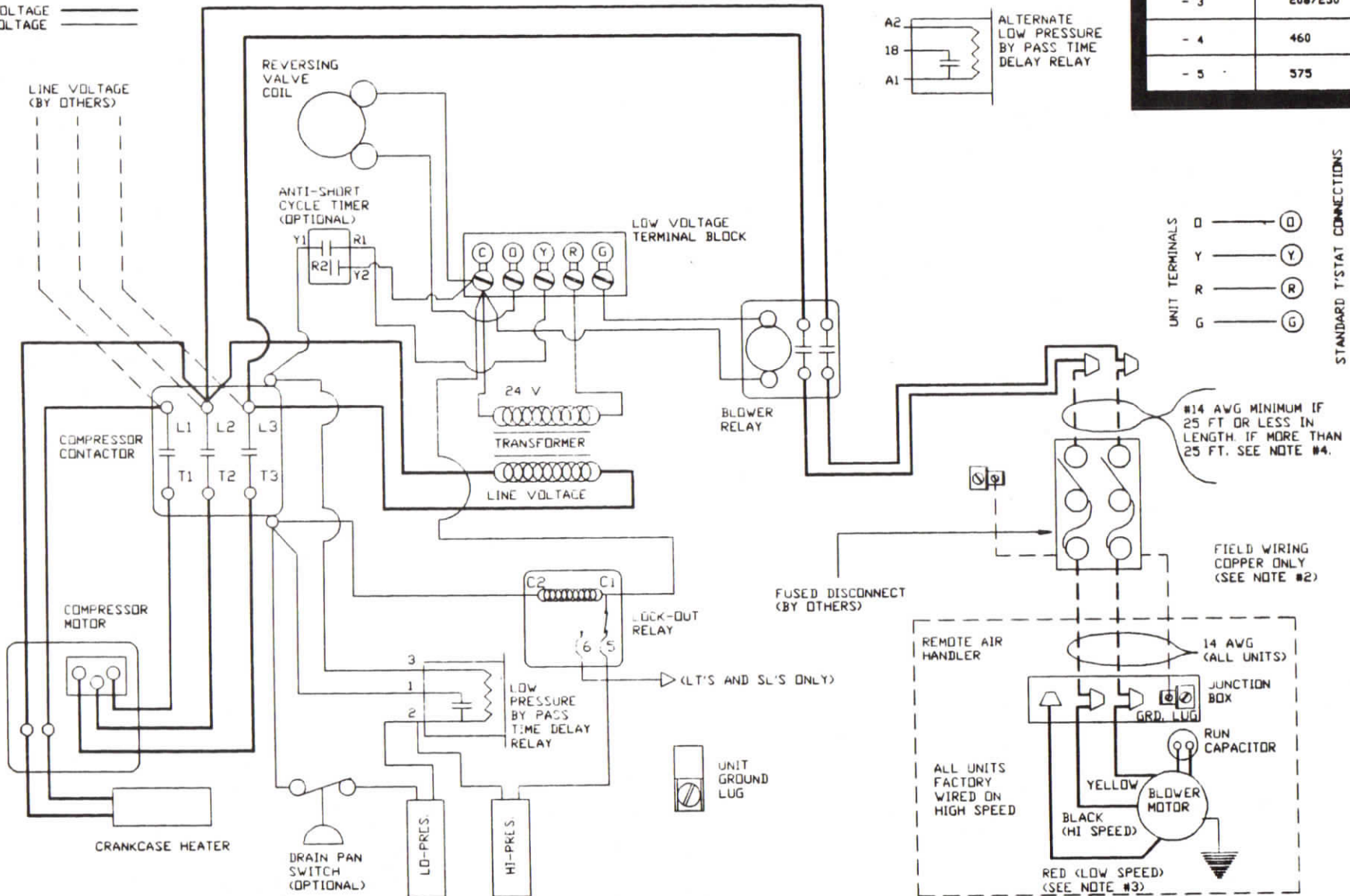
ENERGY MISER ENVIRONMENT SYSTEMS

FHP Manufacturing a HARROW company

SCALE NONE	DRAWING # WD-168	DRAWN BY K.M.N.
DATE 10-10-91		REVISION 4-9-92
SPLIT SYSTEM WIRING DIAGRAM THREE PHASE - ALL VOLTAGES HE031-062 & SE053-063 LT040-070 & SL055-065 MODEL HEAT PUMPS		
VOLTAGE DESIGNATOR	LINE VOLTAGE THREE PHASE/60 Hz	
- 3	208/230	
- 4	460	
- 5	575	

POWER SUPPLY L1, L2, L3 (USE COPPER CONDUCTORS ONLY)

LINE VOLTAGE   
LOW VOLTAGE



STANDARD T-STAT CONNECTIONS

#14 AVG MINIMUM IF 25 FT OR LESS IN LENGTH. IF MORE THAN 25 FT. SEE NOTE #4.

FIELD WIRING COPPER ONLY (SEE NOTE #2)

