

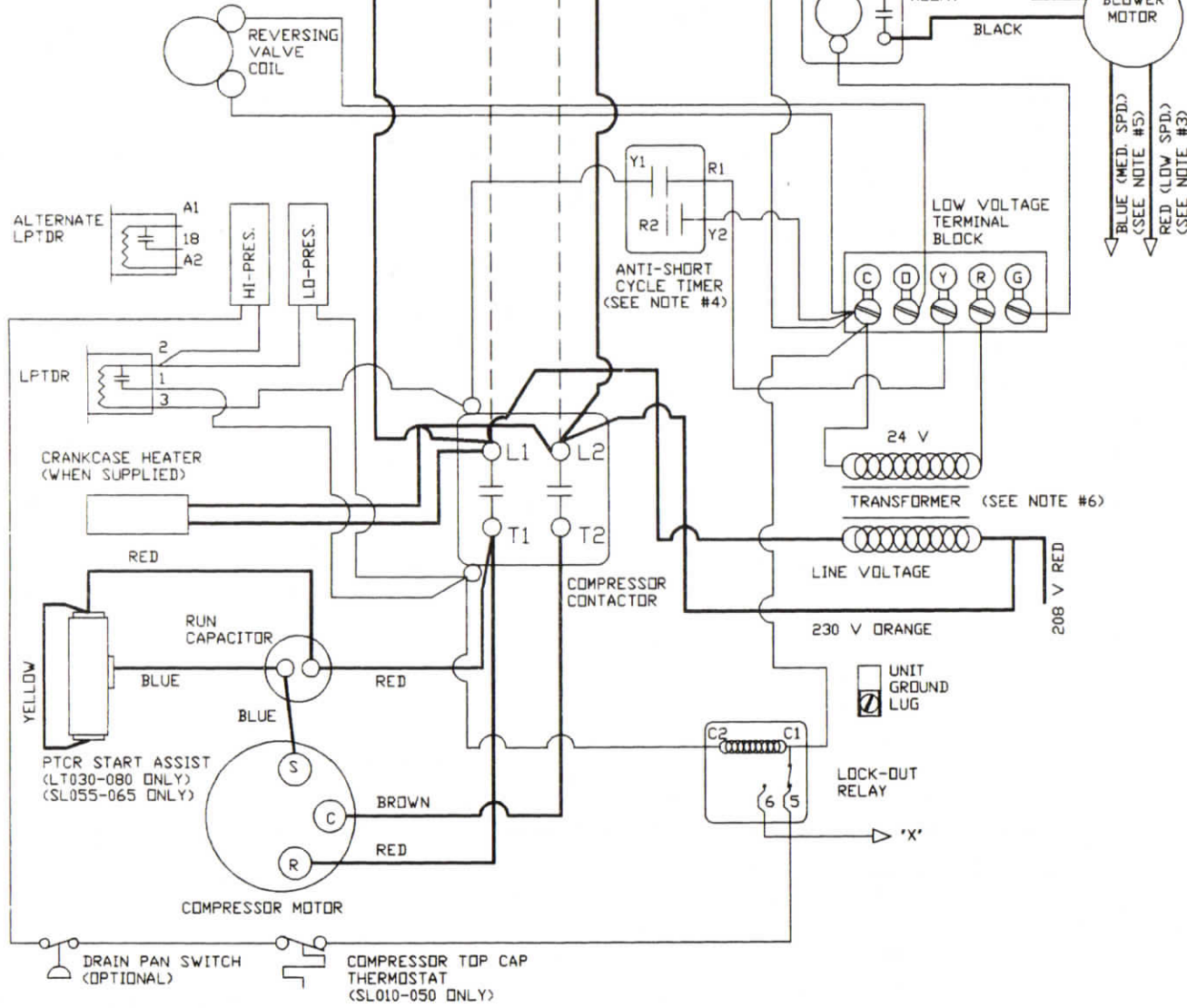


POWER SUPPLY CONNECTS TO L1 AND L2 (USE COPPER CONDUCTORS ONLY)
 LINE VOLTAGE 
 LOW VOLTAGE 



UNIT TERMINALS
 O ——— (O)
 Y ——— (Y)
 R ——— (R)
 G ——— (G)

BLOWER MOTOR RUN CAPACITOR

STD. T-STAT CONNECT

FHP
 ENERGY MISER
 ENVIRONMENT
 SYSTEMS
 FHP MANUFACTURING
 a Harrow company

SCALE NONE	DRAWING # WD-166	DRAWN BY K.M.N.
DATE 6-17-91		REV. DATE 4-7-92

WIRING DIAGRAM
 ALL VOLTAGES
 LT010-090 & SL010-065
 MODEL HEAT PUMPS

VOLTAGE DESIGNATOR	LINE VOLTAGE SINGLE PHASE/60 Hz	APPLICABLE MODELS
- 0	115	LT010 SL010
- 1	208/230	SL010-065 LT010-090
- 2	265	LT010-040 SL016

NOTES:

1. SEE UNIT NAME PLATE FOR ELECTRICAL RATING.
2. ALL FIELD WIRING MUST BE IN ACCORDANCE WITH N.E.C. NFPA No. 70.
3. ALL MODELS EXCEPT LT030 AND SL030.
4. STANDARD ON SL020-050 MODELS, OPTIONAL ACCESSORY FOR ALL OTHERS.
5. AVAILABLE LT010-015 & SL010 MODELS ONLY.
6. 208/230 VOLT UNITS ARE FACTORY WIRED FOR 230 VOLTS FOR 208 VOLT OPERATION. REMOVE ORANGE LEAD AND TAPE, REPLACE WITH RED LEAD.
7. ALL UNITS WIRED ON HIGH SPEED EXCEPT LT/SL010 (MEDIUM).
8. LPTDR = LOW PRESSURE BY PASS TIME DELAY RELAY.
10. HARD START KIT FOR LT090 NOT SHOWN.