



| | | |
|-----------------|---------------------|--------------------|
| SCALE NONE | DRAWING # WD-164 | DRAWN BY K.M.N. |
| DATE 1-30-92 | REVISION | |

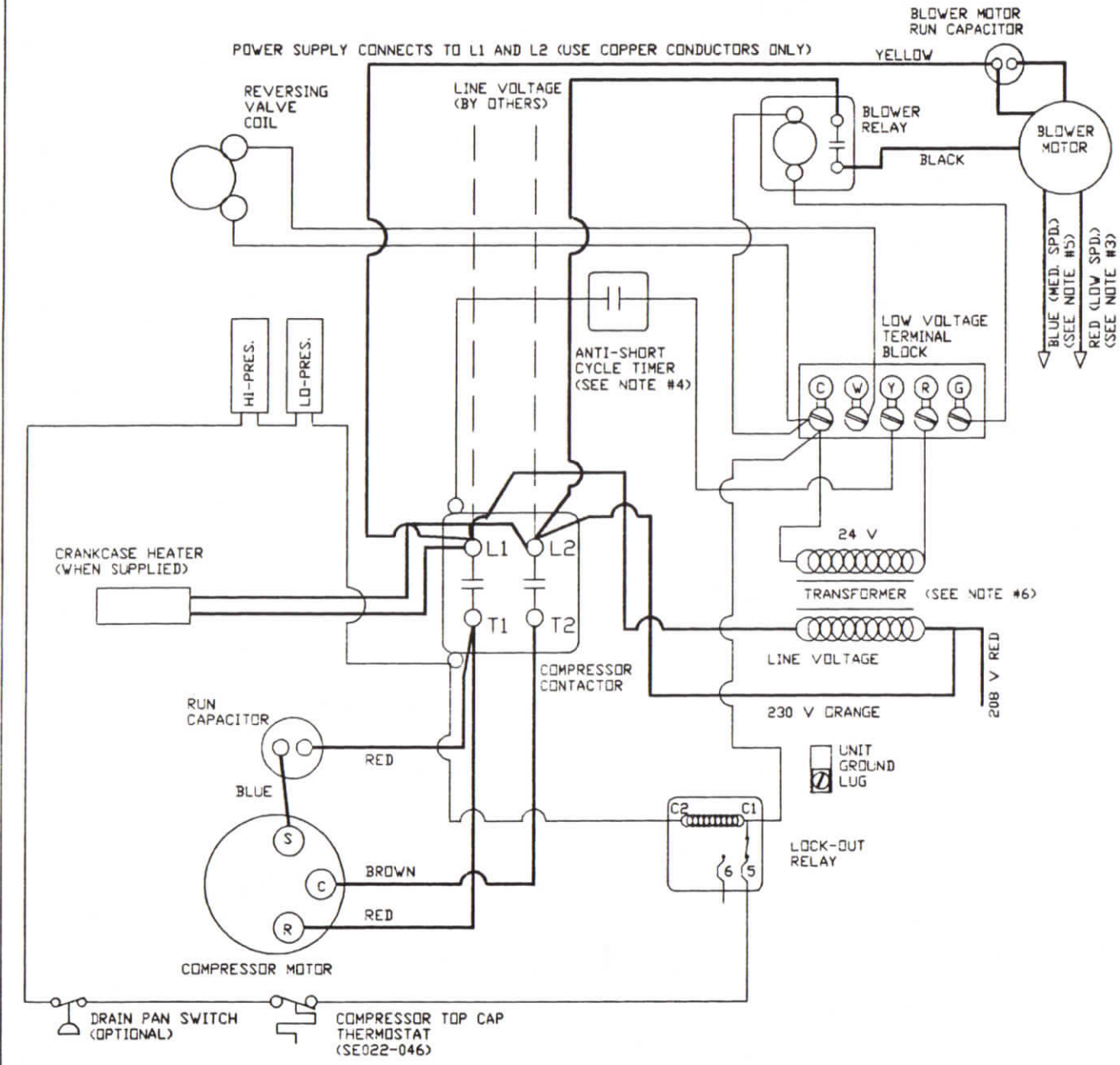
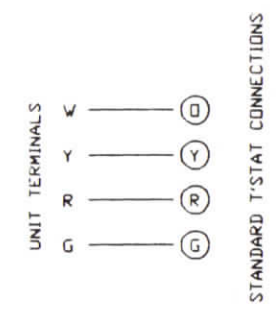
WIRING DIAGRAM
ALL VOLTAGES
HE007-080 & SE022-063
MODEL HEAT PUMPS

| VOLTAGE DESIGNATOR | LINE VOLTAGE SINGLE PHASE/60 Hz | UNITS |
|--------------------|---------------------------------|------------------------|
| - 0 | 115 | HE007-009 |
| - 1 | 208/230 | HE007-080 SE022-063 |
| - 2 | 265 | HE007-034 |

NOTES:

1. SEE UNIT NAME PLATE FOR ELECTRICAL RATING.
2. ALL FIELD WIRING MUST BE IN ACCORDANCE WITH N.E.C. NFPA No. 70.
3. ALL MODELS EXCEPT HE027 AND SE026
4. STANDARD ON ALL SE MODELS, OPTIONAL ACCESSORY FOR ALL OTHERS.
5. AVAILABLE ON HE007 - 015 MODELS ONLY
6. 208/230 VOLT UNITS ARE FACTORY WIRED FOR 230 VOLTS. FOR 208 VOLT OPERATION, REMOVE ORANGE LEAD AND TAPE, REPLACE WITH RED LEAD.
7. ALL UNITS WIRED ON HIGH SPEED EXCEPT HE007 (LOW), HE009/LT010 (MED).

LINE VOLTAGE _____
LOW VOLTAGE (24 V) _____



BLUE (MED. SPD.) (SEE NOTE #5)
RED (LOW SPD.) (SEE NOTE #3)