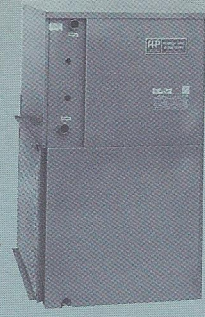


MODEL LTV
(Vertical)



MODEL LTH
(Horizontal)



MODEL LTCF
(Counterflow)



**SPECIFICATION
DATA SHEET**

**LT 70
LO-TEMP SERIES**

**FLORIDA HEAT PUMP HIGH-EFFICIENCY
WATER SOURCE HEAT PUMPS**

ELECTRICAL SPECIFICATIONS

Electrical Characteristics	Elect. Sym.	Compressor		Blower		Rated (2) Oper. Amp.		Min. Circuit Ampacity	Fuse (T/D) HACR Cir. Bkr.
		RLA	LRA	NPA	H.P.	Cool	Heat		
208/230-1-60	-1	27.1	141	4.6	3/4	22.9	26.9	38.5	60
265-1-60	-2	N/A	N/A	N/A	N/A	N/A	N/A	N/A	N/A
208/230-3-60	-3	17.0	110	4.6	3/4	15.9	18.1	25.8	35
460-3-60	-4	8.2	55	2.5	3/4	8.0	8.9	12.8	20

Model LT 70 units are complete packages containing all refrigeration components: hermetic compressor, reversing valve, expansion valve metering device and water-to-refrigerant condenser. Also included are safety controls: Overload protection for motors, high and low refrigerant pressure switches and a lock-out impedance relay. The units are finished in a beige color.

MECHANICAL SPECIFICATIONS

(2) ARI high temp. operation.

COOLING (ARI CERTIFIED)				GPM	HEATING (ARI CERTIFIED)				GPM	CFM (1)	EVAPORATOR				BLWR SIZE	WEIGHT	
HIGH TEMP.	LOW TEMP.	EER	Btuh		HIGH TEMP.	LOW TEMP.	COP	Btuh			FACE AREA	ROWS DEEP	TUBE SIZE	FPI		NET	SHIPPING
65000	73000			10.6	13.0	12.0			80000	3.4	62000	3.0	12.0	2000	4.5	3	3/8

Certified ratings per ARI Std. 325. Evaporator face area in sq. ft. All condensers with enhanced tube surface. All evaporators with enhanced tube & fin surface.

CAPACITY DATA: All performance at rated CFM (1).

EWT °F	GPM	COOLING								HEATING					
		Ent. Air W.B., °F	Total Btuh	Watts Input	Heat Rej. Btuh	Sensible Btuh, at ent. air dry bulb, °F			EER	WPD Ft. Hd.	Ent. Air D.B., °F	Htg. Btuh	Heat of Absorb. Btuh	Watts Input	COP
						75	80	85							
45	8	63	66.5	4895	83.2	46.1	58.1	—	13.6	2.6	60	62.0	46.0	4685	3.9
		67	70.7	4940	87.5	38.9	50.9	63.9	14.3						
		71	75.2	4982	92.2	20.7	40.4	53.3	15.1						
	12	63	70.3	4707	86.3	47.4	59.6	—	14.9	5.9	70	58.5	41.1	5092	3.4
		67	74.7	4750	90.9	40.0	52.3	65.1	15.7						
		71	79.5	4790	95.8	21.3	41.4	54.7	16.6						
16	63	74.1	4518	89.5	48.6	61.2	73.7	16.4	10.4	80	58.9	41.4	4708	3.9	
	67	78.7	4560	94.2	41.0	53.6	67.3	17.3							
	71	83.8	4598	99.4	21.8	42.5	56.1	18.2							
50	8	63	65.0	4978	81.9	45.7	57.5	—	13.1	2.6	60	59.1	43.5	4585	3.8
		67	69.0	4992	86.0	38.7	50.5	63.3	13.8						
		71	73.5	5098	90.8	20.5	40.0	52.8	14.4						
	12	63	68.7	4787	85.0	46.9	59.1	—	14.4	5.9	70	62.0	49.4	4775	4.0
		67	73.0	4800	89.3	39.7	51.8	65.0	15.2						
		71	77.7	4902	94.4	21.1	41.1	54.2	15.8						
16	63	72.5	4595	88.1	48.2	60.6	—	15.8	10.4	80	66.2	49.8	4798	4.0	
	67	76.9	4608	92.6	40.7	53.2	66.7	16.7							
	71	81.9	4706	97.9	21.6	42.1	55.6	17.4							
60	8	63	62.0	5185	79.6	43.7	55.5	—	11.9	2.6	60	69.6	52.1	5135	4.0
		67	65.3	5200	83.0	37.1	48.4	61.2	12.6						
		71	70.0	5316	88.1	19.3	38.2	51.0	13.2						
	12	63	65.5	4990	82.5	44.9	57.0	—	13.1	5.9	70	77.4	59.1	5350	4.2
		67	69.0	5010	86.0	38.1	49.7	62.8	13.8						
		71	74.0	5112	91.4	19.8	39.2	52.4	14.5						
16	63	69.1	4790	85.4	46.0	58.5	—	14.4	10.4	80	77.9	59.6	5378	4.2	
	67	72.7	4810	89.1	39.0	50.9	64.5	15.2							
	71	78.0	4907	94.7	20.3	40.3	53.8	15.9							
70	8	63	58.8	5385	77.1	41.9	52.8	—	10.9	2.6	60	76.3	58.2	5310	4.2
		67	61.5	5415	79.9	35.5	46.3	58.0	11.4						
		71	66.4	5536	85.2	18.8	36.7	48.4	12.0						
	12	63	62.1	5200	79.8	43.1	54.2	—	11.9	5.9	70	84.8	65.9	5530	4.5
		67	65.0	5220	82.8	36.4	47.5	59.6	12.5						
		71	70.2	5323	88.3	19.3	37.6	49.7	13.2						
16	63	65.5	4990	82.5	44.2	55.6	—	13.1	10.4	80	85.4	66.4	5558	4.5	
	67	68.5	5020	85.6	37.3	48.7	61.1	13.7							
	71	74.0	5110	91.4	19.8	38.6	51.0	14.5							
85	8	63	53.7	5907	73.8	39.2	50.0	—	9.1	2.6	60	91.2	71.0	5920	4.5
		67	56.6	5938	76.8	33.3	43.5	55.2	9.5						
		71	60.6	6008	81.1	17.1	34.3	46.0	10.1						
	12	63	56.8	5680	76.1	40.2	51.3	—	10.0	5.9	70	101.3	82.3	6166	4.8
		67	59.9	5710	79.3	34.2	44.6	56.7	10.5						
		71	64.1	5777	83.8	17.6	35.2	47.3	11.1						
16	63	59.9	5452	78.5	41.3	52.7	—	11.0	10.4	80	95.6	72.7	6701	4.2	
	67	63.1	5482	81.8	35.1	45.8	58.2	11.5							
	71	67.5	5546	86.4	18.0	36.1	48.5	12.2							
100	8	63	48.5	6431	70.4	36.3	46.2	—	7.5	2.6	60	79.9	79.9	6433	3.9
		67	51.4	6490	73.5	30.8	40.2	50.9	7.9						
		71	54.7	6540	77.0	15.8	31.7	42.5	8.4						
	12	63	51.2	6183	72.3	37.2	47.4	—	8.3	5.9	70	87.7	87.7	6701	4.2
		67	54.3	6240	75.5	31.6	41.3	52.3	8.7						
		71	57.8	6288	78.8	16.3	32.6	43.7	9.2						
16	63	54.0	5936	74.2	38.2	48.7	—	9.1	10.4	80	96.9	96.9	6829	3.9	
	67	57.2	5990	77.6	32.4	42.3	53.7	9.6							
	71	60.9	6037	81.5	16.7	33.4	44.8	10.1							

ALL BTUH ARE THOUSANDS

