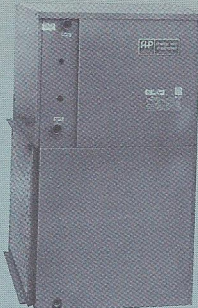


MODEL LTV
(Vertical)



MODEL LTH
(Horizontal)



MODEL LTCF
(Counterflow)



**SPECIFICATION
DATA SHEET**

**LT 60
LO-TEMP SERIES**

**FLORIDA HEAT PUMP HIGH-EFFICIENCY
WATER SOURCE HEAT PUMPS**

Model LT 60 units are complete packages containing all refrigeration components: hermetic compressor, reversing valve, expansion valve metering device and water-to-refrigerant condenser. Also included are safety controls: Overload protection for motors, high and low refrigerant pressure switches and a lock-out impedance relay. The units are finished in a beige color.

ELECTRICAL SPECIFICATIONS

Electrical Characteristics	Elect. Sym.	Compressor		Blower		Rated (2) Oper. Amp.		Min. Circuit Ampacity	Fuse (T/D) HACR Cir. Bkr.
		RLA	LRA	NPA	H.P.	Cool	Heat		
208/230-1-60	-1	21.2	108	3.9	1/2	20.0	23.0	30.4	45
265-1-60	-2	N/A	N/A	N/A	N/A	N/A	N/A	N/A	N/A
208/230-3-60	-3	14.0	74	3.9	1/2	14.0	15.5	21.4	30
460-3-60	-4	6.5	37	1.7	1/2	7.0	8.0	9.9	15

(2) ARI high temp. operation.

MECHANICAL SPECIFICATIONS

COOLING (ARI CERTIFIED)				HEATING (ARI CERTIFIED)						CFM (1)	EVAPORATOR				BLWR SIZE	WEIGHT	
HIGH TEMP.		LOW TEMP.		GPM	HIGH TEMP.		LOW TEMP.		GPM		FACE AREA	ROWS DEEP	TUBE SIZE	FPI		NET	SHIPPING
Btuh	EER	Btuh	EER		Btuh	COP	Btuh	COP									
55000	11.5	61000	14.5	9.5	65000	3.5	50500	3.0	9.5	1700	4.5	3	3/8	14	10 x 8	420	429

Certified ratings per ARI Std. 325. Evaporator face area in sq. ft. All condensers with enhanced tube surface. All evaporators with enhanced tube & fin surface.

CAPACITY DATA: All performance at rated CFM (1).

EWT °F	GPM	COOLING								HEATING					
		Ent. Air W.B., °F	Total Btuh	Watts Input	Heat Rej. Btuh	Sensible Btuh, at ent. air dry bulb, °F			EER	WPD Ft. Hd.	Ent. Air D.B., °F	Htg. Btuh	Heat of Absorb. Btuh	Watts Input	COP
						75	80	85							
45	6	63	55.3	3580	67.5	36.8	46.4	—	15.5	3.2					
		67	58.8	3613	71.1	31.2	40.7	51.0	16.3						
		71	62.5	3643	74.9	16.5	32.2	42.5	17.2						
	9.5	63	58.8	3428	70.4	37.9	47.7	57.4	17.2	7.5	60	50.5	37.5	3831	3.9
		67	62.5	3460	74.3	32.1	41.9	52.5	18.1						
		71	66.5	3488	78.4	17.0	33.2	43.8	19.1						
	13	63	62.4	3277	73.5	39.0	49.1	59.2	19.0	14.1	60	50.8	37.8	3831	3.9
		67	66.2	3307	77.4	33.0	43.1	54.2	20.0						
		71	70.5	3334	81.8	17.5	34.1	45.1	21.1						
50	6	63	54.0	3705	66.6	36.5	45.9	—	14.6	3.2	60	49.2	36.2	3795	3.8
		67	57.4	3723	70.1	30.9	40.3	50.5	15.4						
		71	61.0	3768	73.8	16.3	31.9	42.2	16.2						
	9.5	63	57.4	3548	69.5	37.6	47.3	56.9	16.2	7.5	60	54.6	41.1	3955	4.0
		67	61.0	3565	73.1	31.8	41.5	52.0	17.1						
		71	64.9	3608	77.2	16.9	32.9	43.4	18.0						
	13	63	60.8	3391	72.3	38.7	48.7	58.6	17.9	14.1	60	55.0	41.5	3977	4.1
		67	64.6	3407	76.2	32.7	42.7	53.5	19.0						
		71	68.8	3449	80.5	17.4	33.8	44.6	19.9						
60	6	63	51.4	3948	64.8	35.6	45.0	—	13.0	3.2	60	56.6	42.7	4080	4.1
		67	54.5	3973	68.0	30.2	39.4	49.6	13.7						
		71	58.1	4026	71.8	15.8	31.2	41.4	14.4						
	9.5	63	54.7	3781	67.6	36.7	46.4	—	14.5	7.5	60	62.9	48.4	4250	4.3
		67	58.0	3805	70.9	31.1	40.5	51.1	15.2						
		71	61.8	3856	74.9	16.3	32.1	42.6	16.0						
	13	63	57.9	3614	70.2	37.7	47.7	57.7	16.0	14.1	60	63.4	48.8	4272	4.3
		67	61.5	3637	73.9	31.9	41.7	52.5	16.9						
		71	65.4	3685	77.9	16.8	33.0	43.8	17.8						
70	6	63	48.7	4205	63.0	34.8	43.8	—	11.6	3.2	60	64.0	49.0	4365	4.3
		67	51.7	4224	66.1	29.5	38.5	48.2	12.2						
		71	55.0	4285	69.6	15.6	30.5	40.2	12.8						
	9.5	63	51.8	4027	65.5	35.9	45.1	—	12.9	7.5	60	69.0	55.5	4545	4.4
		67	55.0	4045	68.8	30.3	39.6	49.7	13.6						
		71	58.5	4103	72.5	16.1	31.4	41.4	14.3						
	13	63	54.9	3849	68.0	36.9	46.4	—	14.3	14.1	60	69.5	55.9	4567	4.5
		67	58.3	3866	71.4	31.2	40.7	51.1	15.1						
		71	62.0	3922	75.3	16.6	32.3	42.6	15.8						
85	6	63	44.5	4612	60.2	32.9	41.9	—	9.7	3.2	60	76.5	59.9	4866	4.6
		67	47.1	4643	62.9	27.9	36.5	46.2	10.2						
		71	50.2	4684	66.1	14.4	28.8	38.6	10.7						
	9.5	63	47.3	4417	62.3	33.9	43.1	—	10.7	7.5	60	82.5	65.2	5067	4.8
		67	50.1	4446	65.2	28.8	37.5	47.6	11.3						
		71	53.4	4486	68.7	14.8	29.6	39.7	11.9						
	13	63	50.2	4221	64.6	34.8	44.4	—	11.9	14.1	60	77.7	59.5	5346	4.3
		67	53.1	4250	67.6	29.6	38.6	48.9	12.5						
		71	56.6	4288	71.2	15.3	30.5	40.8	13.2						
100	6	63	40.2	4983	57.2	30.6	38.6	—	8.1	3.2	60	71.1	54.4	4660	4.2
		67	42.6	5033	59.7	25.9	33.9	42.6	8.5						
		71	45.4	5077	62.7	13.4	26.7	35.8	8.9						
	9.5	63	42.7	4772	58.9	31.5	39.8	—	9.0	7.5	60	77.7	59.5	5346	4.3
		67	45.3	4820	61.7	26.7	34.9	44.2	9.4						
		71	48.2	4862	64.7	13.8	27.5	36.9	9.9						
	13	63	45.3	4561	60.8	32.4	40.9	—	9.9	14.1	60	73.4	54.8	5446	3.9
		67	48.0	4607	63.7	27.5	35.9	45.5	10.4						
		71	51.1	4647	66.9	14.2	28.3	37.9	11.0						

ALL BTUH ARE THOUSANDS



SPECIFICATION DATA SHEET

BLOWER PERFORMANCE

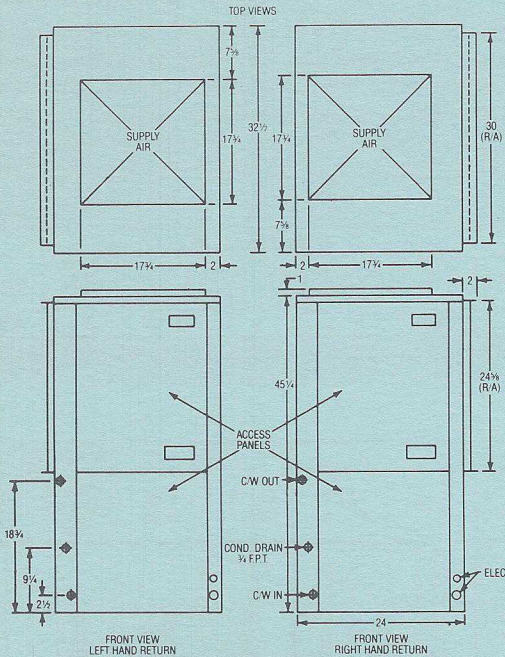
Physical Characteristics

LT 60 LO-TEMP SERIES

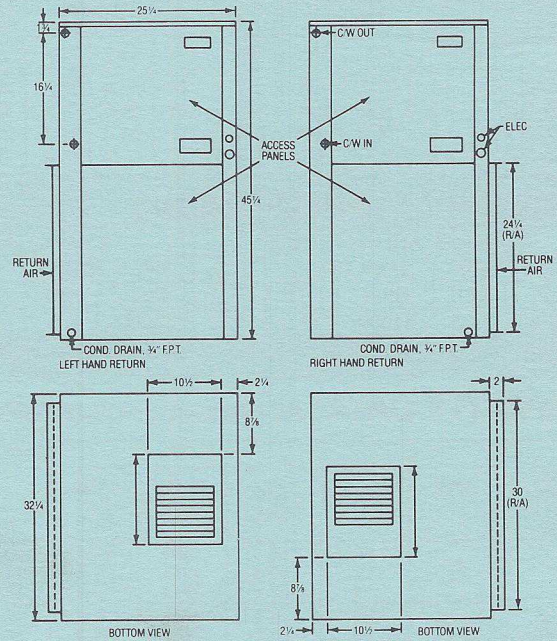
AVAILABLE EXTERNAL STATIC PRESSURE (In. H ₂ O) (Including allowance for wet coil and filter)								
* Fan Speed	.10	.15	.20	.25	.30	.35	.40	.50
HI	1860	1845	1830	1815	1795	1770	1745	1700
LO	1765	1750	1740	1720	1700	1680	1650	1625

*All performance at 230 Volts.

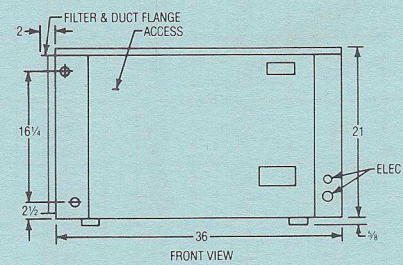
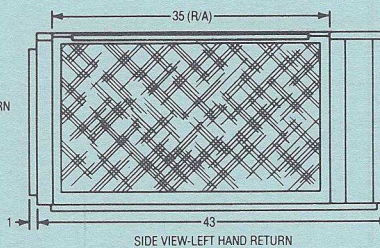
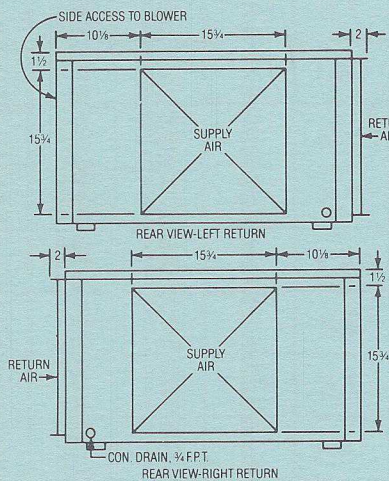
LT 60 Series are available in three configurations. Standard piping is as shown (left-hand) connections. Return air is available either L.H. or R.H. viewing from the front of the unit.



MODEL LTV-60 (VERTICAL)



MODEL LTCF-60 (COUNTERFLOW)



MODEL LTH-60 (HORIZONTAL)

CONDENSER WATER CONNECTIONS: 1" F.P.T.
 FILTER SIZES: LTV, LTCF: 24" x 30" x 1"
 LTH: 19 1/2" x 35" x 1"



FHP MANUFACTURING
 601 N.W. 65TH COURT
 FT. LAUDERDALE, FL 33309
 PHONE: (305) 776-5471 / FAX: 776-5529

As a result of continuing research and development, all ratings and specifications are subject to change without notice.