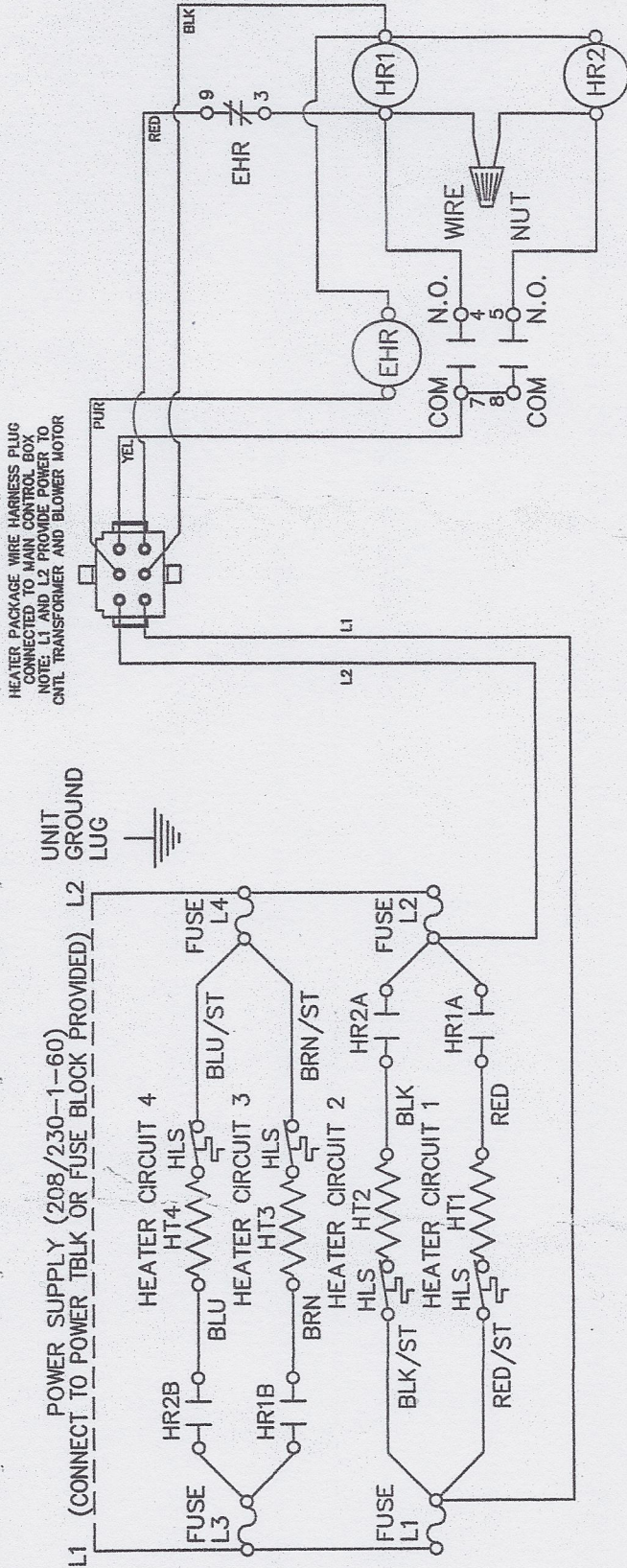


CAUTION: UNIT CONTAINS TWO POWER SUPPLIES -
INSURE BOTH SUPPLIES ARE OFF BEFORE SERVICING.



NOTES:

1. SEE UNIT NAME PLATE FOR ELECTRICAL RATING
2. ALL FIELD WIRING MUST BE IN ACCORDANCE WITH N.E.C.-N.F.P.A. #70
3. USE COPPER CONDUCTORS ONLY
4. WIRE OUTDOOR T-STAT IN PLACE OF WIRE NUT IF HTR STAGING IS REQUIRED (7.5-20kW)

HEATER PACKAGES CONTAIN THE FOLLOWING:

- 3.5-5kW - HEATER CIRCUIT 1, HR1, EHR
- 7.5-10kW - HEATER CIRCUIT 1, 2, HR1, HR2, EHR, WIRE NUT
- 15kW - HEATER CIRCUIT 1, 2, 3, HR1, HR2, EHR, WIRE NUT
- 20kW - HEATER CIRCUIT 1, 2, 3, 4, HR1, HR2, EHR, WIRE NUT
- 3.5-10kW HEATERS ARE NON FUSED, 15 & 20kW ARE FUSED

LEGEND:

- BM - BLOWER MOTOR
- BC - BLOWER MOTOR CAPACITOR (PSC MOTORS ONLY)
- EHR - EMERGENCY HEAT RELAY
- HLS - HIGH TEMP LIMIT SWITCH
- HT1-4 - HEATER ELEMENT 1-4
- HR1,2 - HEATER RELAY 1, 2
- PITB - POWER INTERCONNECT TERMINAL BLOCK

WIRING DIAGRAM	
HP SERIES HEATER PACKAGE	
208-230/1/60V PACKAGE UNITS	
DWG NO.	DATE
HP100000	03-22-10
RKS	REV
	5