

CAUTION: UNIT CONTAINS TWO POWER SUPPLIES - INSURE BOTH SUPPLIES ARE OFF BEFORE SERVICING.

HEATER PACKAGE WIRE HARNESS CONNECTED TO ELECTRIC HEATER CONTROL BOX

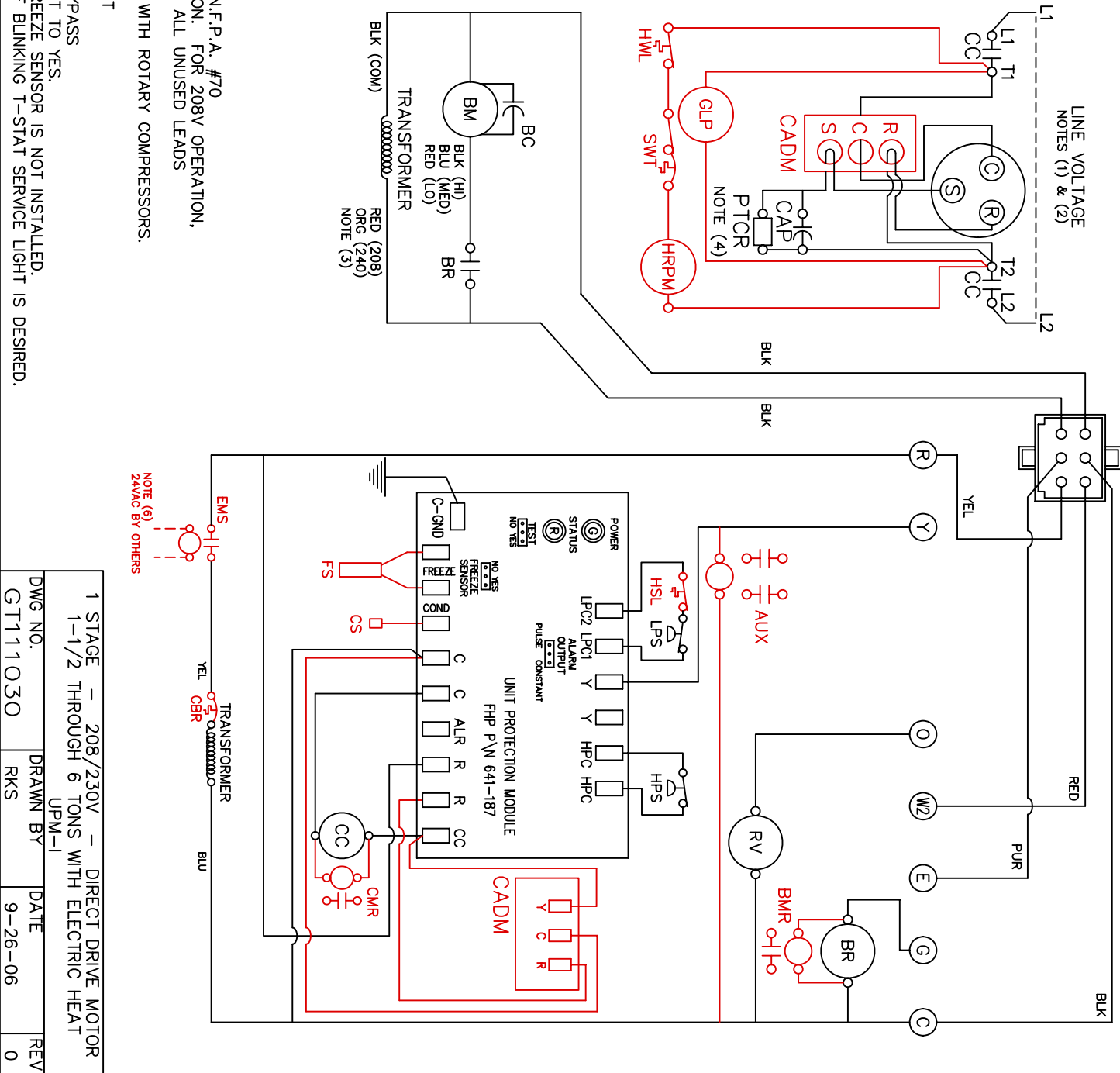
STATUS	LED/ALARM	BLINK CODES
1	HIGH PRESSURE FAULT	
2	LOW PRESSURE FAULT	
3	FREZE SENSOR FAULT	
4	CONDENSATE FAULT	
5	BROWN OUT FAULT	

FACTORY WIRE -----
FIELD WIRE -----

- STANDARD COMPONENTS LEGEND:
- BC - BLOWER MOTOR CAPACITOR
 - BM - BLOWER MOTOR
 - BR - BLOWER RELAY
 - CAP - COMPRESSOR CAPACITOR
 - CC - COMPRESSOR CONTACTOR
 - EOVD - EXTERNAL OVERLOAD (NOTE 5)
 - HPS - HIGH PRESSURE SWITCH
 - LPS - LOW PRESSURE SWITCH
 - PTCR - POS TEMP COEFF RESISTOR (WHEN SUPPLIED)
 - RV - REVERSING VLV (HEAT PUMPS)

- OPTIONAL COMPONENTS LEGEND:
- [] AUX - AUXILIARY RELAY (FOR LOOP PUMP, ETC.)
 - [] BMR - BLOWER MONITOR RELAY
 - [] CADM - COMFORT ALERT DIAGNOSTICS MODULE
 - [] CBR - 24V CRCT BRKR (75VA ONLY)
 - [] CMFR - COMPR MALFUNCTION RELAY
 - [] CMR - COMP MONITOR RELAY
 - [] CS - CONDENSATE SENSOR (IN DRAIN PAN)
 - [] EMS - ENERGY MGMT SYSTEM RELAY
 - [] FS - FREEZE SENSOR
 - [] GLP - GROUND LOOP PUMP
 - [] HRP - HEAT RECOVERY PACKAGE, INCLUDES:
 - HRPM - HEAT RECOVERY PUMP MOTOR
 - HWL - HOT WATER LIMIT (140 DEG)
 - SWT - ON/OFF SWITCH AND OVERLOAD

- NOTES:
1. SEE UNIT NAME PLATE FOR ELECTRICAL RATING
 2. ALL FIELD WIRING MUST BE IN ACCORDANCE WITH N.E.C.-N.F.P.A. #70
 3. 208/230V UNITS ARE FACTORY WIRED FOR 230V OPERATION. FOR 208V OPERATION, REMOVE ORG LEAD AND REPLACE WITH RED LEAD. CAP ALL UNUSED LEADS
 4. PTCR IS STANDARD ON SELECT UNITS.
 5. EXTERNAL OVERLOAD STANDARD ON ALL UNITS EQUIPPED WITH ROTARY COMPRESSORS.
 6. FOR ALTERNATE EMS COIL VOLTAGES CONSULT FACTORY.
 7. UPM-1 INCLUDES BUILT IN:
 - 30-60 SECOND RANDOM START
 - 5 MINUTE DELAY ON BREAK
 - 90 SECOND LOW PRESSURE BYPASS
 8. "TEST" JUMPER PIN REDUCES DELAYS TO 5 SEC WHEN SET TO YES.
 9. "FREEZE SENSOR" JUMPER PIN MUST BE SET TO NO IF FREEZE SENSOR IS NOT INSTALLED.
 10. "ALARM OUTPUT" JUMPER PIN MUST BE SET TO PULSE IF BLINKING T-STAT SERVICE LIGHT IS DESIRED.



1 STAGE - 208/230V - DIRECT DRIVE MOTOR
1-1/2 THROUGH 6 TONS WITH ELECTRIC HEAT
UPM-1
DWG. NO. GT111030
DRAWN BY RKS
DATE 9-26-06
REV 0